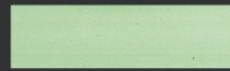




PP



Smooth PET



Embossed PET



plastic cutter handle

P106

Rack tensioner with plastic cutter handle for 1/2" ~ 3/4" PP and PV strapping.



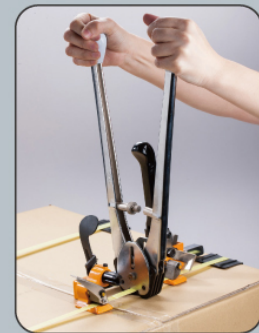
metal cutter handle

P108

Rack tensioner with metal cutter handle for 1/2" ~ 3/4" PP and PV strapping.



Tighten the strap and insert the seal



Crimp the seal



P116

Tensioner with oilless bearings in handle and base. Gripper wheel gives greater tension. For 3/8" ~ 3/4" PP & PET strapping.

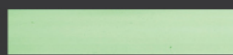


P117

Tensioner with oilless bearings in handle and base. For 3/8" ~ 3/4" PP & PET strapping.



PP



Smooth PET



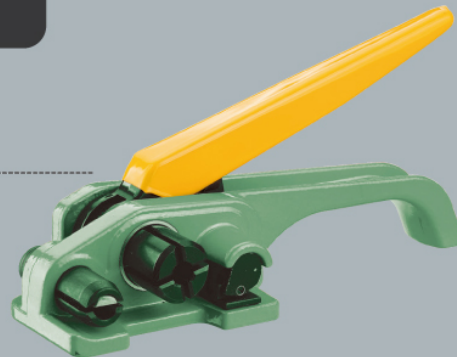
Embossed PET

P260

Heavy duty tensioner with oilless bearings in handle and base.

For 3/8" ~ 3/4" PP & PET strapping.

It is an up-graded tool with stronger base and modified gripper that will not get stuck during operations.

**P270**

Heavy duty tensioner with oilless bearings in handle and base.

For 3/8" ~ 3/4" PP & PET strapping.

**P276**

Heavy duty tensioner with oilless bearings in handle and base.

For PP & PET strapping up to 1".

**P330**

Tensioner with oilless bearings in handle and base.

For 1/2" ~ 3/4" PP & PET strapping.

**P395**

Heavy duty aluminum tensioner with oilless bearings in handle and base.

For 1/2" ~ 3/4" PP & PET strapping.

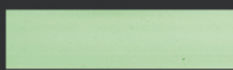
**PQ 200**

Light weight tensioner with oilless bearing in handle and base.

For 1/2" ~ 3/4" PP & PET strapping.



PP



Smooth PET



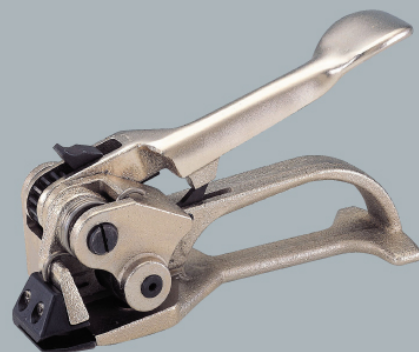
Embossed PET

S 246 / S 247

Deluxe pusher tensioner for PET strapping. Use with wire buckles.

S 246 for 3/8" ~ 3/4" x 0.025" max. PET straps.

S 247 for 5/8" ~ 1-1/4" x 0.35" max. PET straps.



S 249

Pusher feedwheel tensioner for 3/4" ~ 1-1/4" x 0.6 ~ 1.22mm

PET strap. Use with wire buckles.



P 460

Large heavy duty aluminum tensioner with oilless bearings in handle and base.

For 1/2"~1-1/4" PP & PET strapping.



P 173

Hand pull tensioner with cutter for PP strapping.

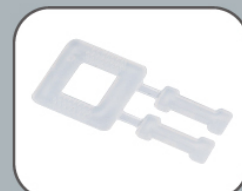
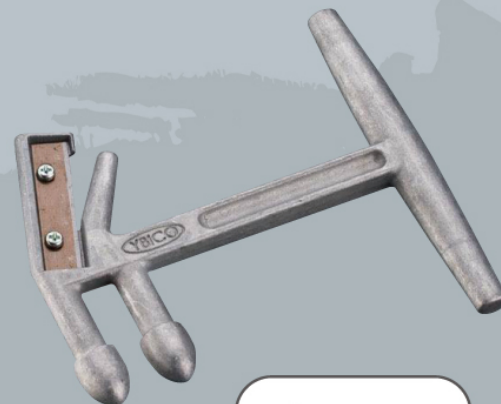
Use with CPB 4/ CPB 42/ CPB 5 buckle.



Tension the strap



Cut the excess strap



CPB 4 / CPB 5 / CPB 42



P 1604 / P 1614 / P 1605 / P 1615

Combination tool (tensioning, sealing and cutting all in one) for PP strapping.

P 1604 for 1/2" PP strapping thickness from 0.5mm up. Use with CP 04 seals.

P 1614 for 1/2" PP strapping thickness up to 0.5mm. Use with CP 04 seals.

P 1605 for 5/8" PP strapping thickness from 0.5mm up. Use with CP 05 seals.

P 1615 for 5/8" PP strapping thickness up to 0.5mm. Use with CP 05 seals.



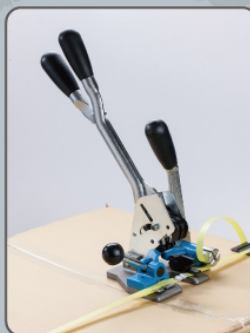
CP 04 / CP 05

P 1624 / P 1625

Combination tool (tensioning, sealing and cutting all in one) for PP strapping.

P 1624 for 1/2" PP strapping thickness from 0.5mm up. Use with CP 04 seals.

P 1625 for 5/8" PP strapping thickness from 0.5mm up. Use with CP 05 seals.

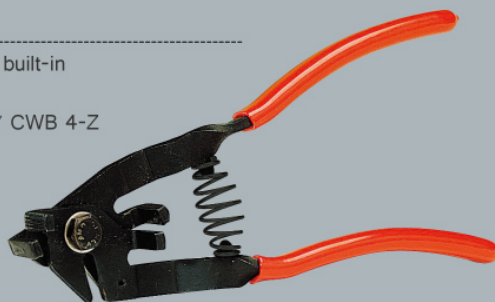


P 18000-P1

One piece of P 180 gripper tensioner with 20 pcs of CWB 4 buckles in blister card pack.

P 180

Twin gripper tensioner with built-in cutter for PP strapping.
Use with CWB 4/ CWB 5/ CWB 4-Z / CWB 5-Z wire buckles.



CWB 4 / CWB 5



P 119

Tensioner with oilless bearings in handle and base.
For 3/8" ~ 3/4" cord strapping.

**P 243**

Tensioner with oilless bearings in handle and bearings in base. For cord straps up to 3/4" wide.

**P 310**

Tensioner with oilless bearings in handle and base.
For 3/8" ~ 3/4" cord strapping.

**P 391**

Heavy duty aluminum tensioner with oilless bearings in handle and base.
For 1/2" ~ 3/4" cord strapping.



Woven



Uniline



C 1004 / C 1005 / C 3086 / C 3096

PP/PV strapping sealer. Whole tool is heat-treated.

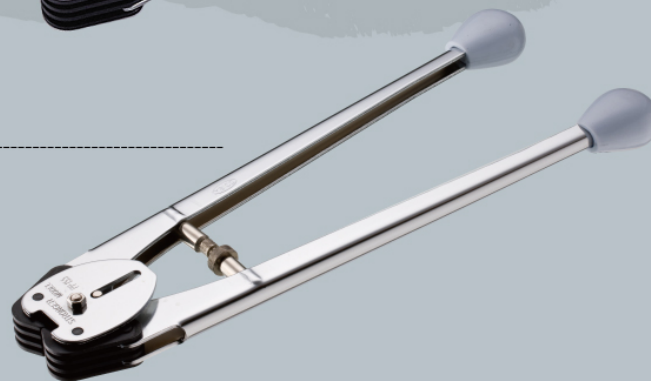
- C 1004: 1/2" PP strapping. Use with CP 24 seal.
- C 1005: 5/8" PP strapping. Use with CP 25 seal.
- C 3086: 3/4" PP strapping. Use with closed seal.
- C 3096: 3/4" PV strapping. Use with closed seal.



C 1040 / C 2040

5/8" PP strapping sealer. Use with CP25 seal.

- C 1040: Handle length 13"
- C 2040: Handle length 14"



C 3004 / C 3014 / C 3005 / C 3015 / C 3016 / C 3026

PP strapping sealer. Whole tool is heat-treated.

- C 3004: 1/2" PP strapping. Use with CP 04 / CP 14 seal. Handle length 13".
- C 3014: 1/2" PP strapping. Use with CP 04 / CP 14 seal. Handle length 17".
- C 3005: 5/8" PP strapping. Use with CP 05 / CP 15 seal. Handle length 13".
- C 3015: 5/8" PP strapping. Use with CP 05 / CP 15 seal. Handle length 17".
- C 3016: 3/4" PP strapping **thickness up to 0.6mm**. Use with CP 16 seal. Handle length 17".
- C 3026: 3/4" PP strapping **thickness from 0.6mm up**. Use with CP 16 seal. Handle length 17".



C 3304 / C 3364 / C 3305 / C 3365

PP strapping sealer. Whole tool is heat-treated.

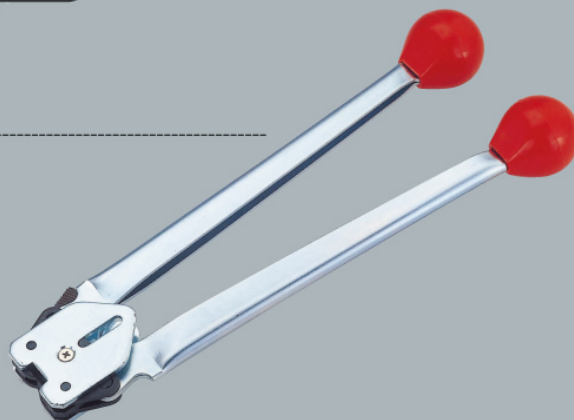
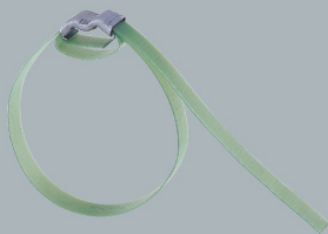
- C 3304: 1/2" PP strapping. Use with CP 04 / CP 14 seal. Handle length 14".
- C 3364: 1/2" PP strapping. Use with CP 04 / CP 14 seal. Handle length 17".
- C 3305: 5/8" PP strapping. Use with CP 05 / CP 15 seal. Handle length 14".
- C 3365: 5/8" PP strapping. Use with CP 05 / CP 15 seal. Handle length 17".





C 5204

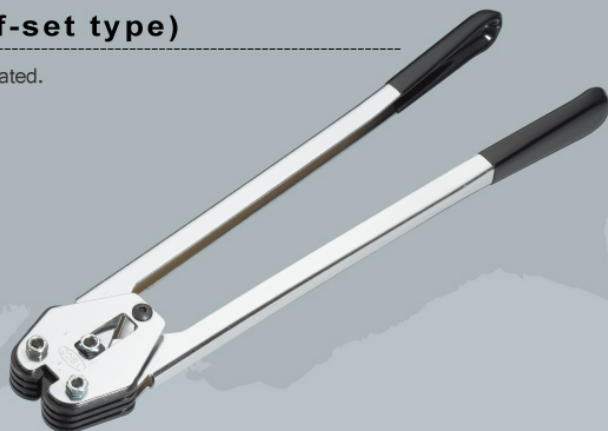
1/2" PET strapping sealer.



C 5004 / C 5005 / 5015 / C 5006 (off-set type)

High quality 17" handle PET strapping sealer. Whole tool is heat-treated.

- C 5004: 1/2" PET strapping. Use with CP 34 gripper seal.
- C 5005: 5/8" PET strapping. Use with CP 35 gripper seal.
- C 5015: 5/8" PET strapping **thickness from 0.8mm up**. Use with CP 35 gripper seal.
- C 5006: 3/4" PET strapping **thickness up to 0.8mm**.



C 5304 / C 5305 / C5315 (off-set type)

Unique labor saving designed PET strapping sealer. Handle length 16.5".

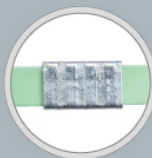
- C 5304: 1/2" PET strapping thickness up to 0.7mm. Use with CP 34 gripper seal.
- C 5305: 5/8" PET strapping thickness up to 0.7mm. Use with CP 35 gripper seal.
- C 5315: 5/8" PET strapping thickness up to 1mm. Use with CP 35 gripper seal.

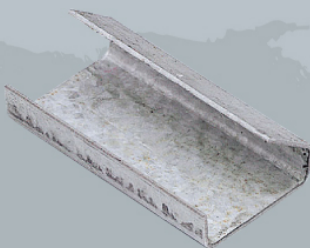
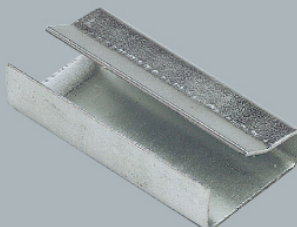


C 5324 / C 5325 (symmetrical type)

Heavy duty PET strapping sealer. Good for thickness up to 1.2mm. Handle length 16.5".

- C 5324: 1/2". Use with CP 34 gripper seal.
- C 5325: 5/8". Use with CP 35 gripper seal.



**CP 04 / CP 05****CP 14 / CP 15 / CP 16****CP 24 / CP 25****CP 34 / CP 35****CP 3602****CPB 4 / CPB 5****CPB 42 / CPB 62****CP 04 / CP 05**

Open seals for PP strapping, 25 mm long.

- CP 04 for 1/2" straps.
Use with P1604 / P1614 / P1624 / C3004 / C3014 / C3304 / C3364.
- CP 05 for 5/8" straps.
Use with P1605 / P1615 / P1625 / C3005 / C3015 / C3365.

CP 14 / CP 15 / CP 16

Open seals for PP strapping, 29mm long.

- CP 14 for 1/2" straps.
Use with C3004 / C3014 / C3304 / C3364.
- CP 15 for 5/8" straps.
Use with C3005 / C3015 / C3305 / C3365.
- CP 16 for 3/4" straps.
Use with C3016 / C3026.

CP 24 / CP 25

Closed seals (push-type seals) for PP strapping.

- CP 24 for 1/2" straps.
Use with C 1004.
- CP 25 for 5/8" straps.
Use with C 1005 / C 1040 / C 2040.

CP 34 / CP 35

Gripper (serrated) seals with zinc coating for PET strapping, 30mm long.

- CP 34 for 1/2" straps. Use with C 5004 / C 5304 / PE 10241.
- CP 35 for 5/8" straps. Use with C 5005 / C 5015 / C 5305 / PE 10251.

CP 3602

3/4" gripper (serrated) seals for PET straps thickness from 0.8 to 1.3mm. Seal thickness 2mm. Use with C 600 / C 601 / C 620 / C 621.

CPB 4 / CPB 5

Plastic buckles ideal for light duties. Use with PP or cord strapping. Straps are tightened by hand or P 173 hand pull tensioner.

- CPB 4: 1/2"
- CPB 5: 5/8"

CPB 42 / CPB 62

Plastic buckle with foot lock for easier operation.

- CPB 42: 1/2"
- CPB 62: 3/4"

**SL 200**

Sealless steel strapping tool.

Strap Gauge range from 0.015" ~0.027".

One tool works for 1/2", 5/8" and 3/4".

Tensioning, sealing and cutting all in one.

SL 220

With SL 220-90 base protector installed in SL 200 tool.

**S 220 - 90**

This is an additional accessory for SL 200 and SL 210. It is used as a base protector to prevent the tool body from scratch or damage during the operation.

SL 210

Same as SL 200 but all plastic material are with -40 degree Celsius resistance. Ideal for cold working environment.

SL 230

With SL 200-90 base protector installed in SL 210 tool.



SL 200



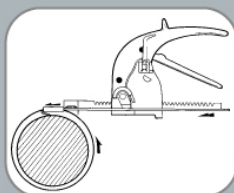
SL 210



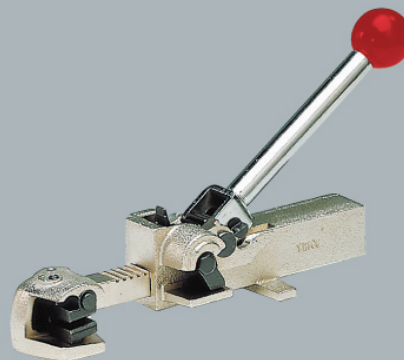
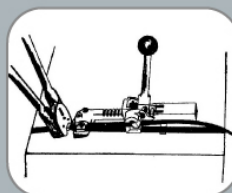
Tension the strap



Seal and cut the strap

**S 210**

Push bar tensioner with breaker nose to cut the strap. Use with closed seals or wing seal. For 3/8" ~ 3/4" x 0.02" max. steel strapping. Good for round, irregular or non-compressible packages.

**S 220**

Rack tensioner for 3/8" ~ 3/4" x 0.03" max steel strapping. Use with open seal. Good for flat packaging. Need cutter.

**S 226**

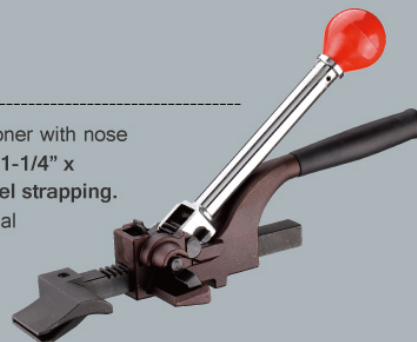
Rack tensioner with duckwork and built-in cutter for 3/8" ~ 3/4" steel strapping. Ideal for round and irregular packages. Use with closed seal or wing seal.

S 225

Rack tensioner with duckwork and built-in cutter for 3/8" ~ 3/4" steel strapping. Ideal for round and irregular packages. Use with closed seal or wing seal.

**S 227**

Rack pusher tensioner with nose function for 3/8" ~ 1-1/4" x 0.015"~0.031" steel strapping. Use with closed seal or wing seal.



S 290

Popular feedwheel tensioner for steel strapping 3/8" ~ 3/4" x 0.035". Good for flat packages.

**S 291**

Same as S 290 yet nickel plated.



Tension the strap



Place the seal



Close the seal

S 292

High tensile feedwheel tensioner with durable lost wax casting handle. For steel strapping 3/8" ~ 3/4" x 0.035". Good for flat packages.

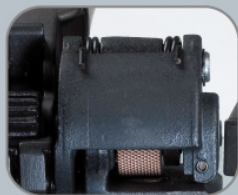


S 293

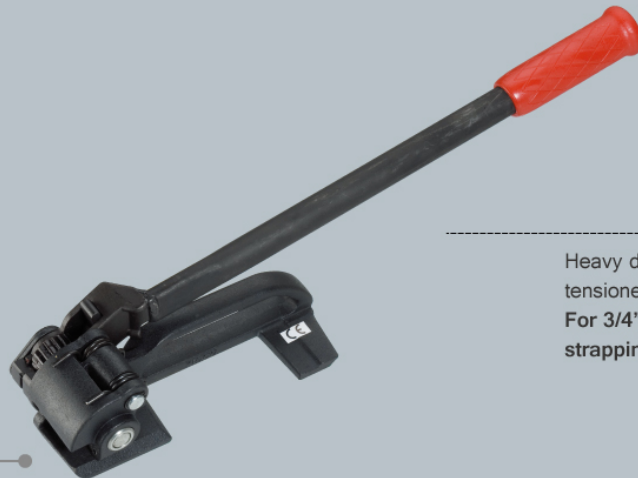
Feedwheel tensioner for steel strapping $3/8" \sim 3/4" \times 0.035"$.
Good for flat packages.

**S 296**

Heavy duty high tensile feedwheel tensioner for steel strapping $3/8" \sim 3/4" \times 0.035"$. Good for flat packages.



17.5 mm

**S 298**

Heavy duty high tensile feedwheel tensioner with stronger and longer handle.
For $3/4" \sim 1-1/4" \times 0.035"$ steel strapping. Good for flat packages.



26 mm

**S 350**

Heavy duty high tensile feedwheel tensioner for steel strapping $3/4" \sim 1-1/4" \times 0.035"$.

C 3103 / C 3104 / C 3105 / C 3106

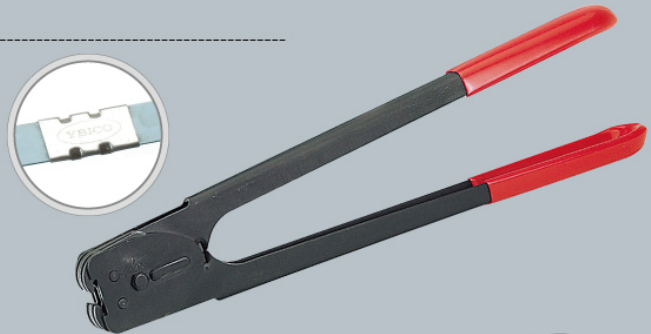
Double notched 11" handle steel strapping sealer. Whole tool is heat-treated.

- C 3103: 3/8".
- C 3104: 1/2". Use with CS 041 open seal or CSB 41 closed seal.
- C 3105: 5/8". Use with CS 051 open seal or CSB 51 closed seal.
- C 3106: 3/4". Use with CS 061 open seal or CSB 61 closed seal.

**C 3123 / C 3124 / C 3125 / C 3126**

Double notched 14" handle labor saving steel strapping sealer. Whole tool is heat-treated.

- C 3123: 3/8".
- C 3124: 1/2". Use with CS 041 open seal or CSB 41 closed seal.
- C 3125: 5/8". Use with CS 051 open seal or CSB 51 closed seal.
- C 3126: 3/4". Use with CS 061 open seal or CSB 61 closed seal.

**C 3154 / C 3155 / C 3156**

Single notched high tensile 11" handle steel strapping sealer. Whole tool is heat-treated.

- C 3154: 1/2". Use with CSB 41 closed seal.
- C 3155: 5/8". Use with CSB 51 closed seal.
- C 3156: 3/4". Use with CSB 61 closed seal.

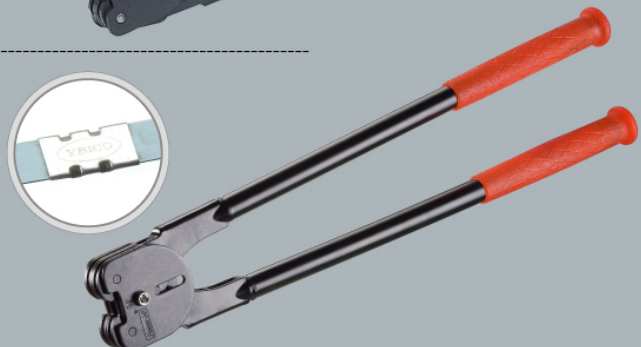
**C 3203 / C 3204 / C 3205 / C 3206**

Double notched 13.5" handle steel strapping sealer. Whole tool is heat-treated.

- C 3203: 3/8".
- C 3204: 1/2". Use with CS 041 open seal or CSB 41 closed seal.
- C 3205: 5/8". Use with CS 051 open seal or CSB 51 closed seal.
- C 3206: 3/4". Use with CS 061 open seal or CSB 61 closed seal.

**C 3226**

3/4" heavy duty double notched 17" handle steel strapping sealer. Whole tool is heat-treated. Use with CS 061 open seal or CS 20/ CS 21/ CS22/ CSB 61 closed seal.





C 3160 / C 3166 / C 3180

Double notched side action steel strapping sealer with aluminum pipe handle. (Handle length 25.5")

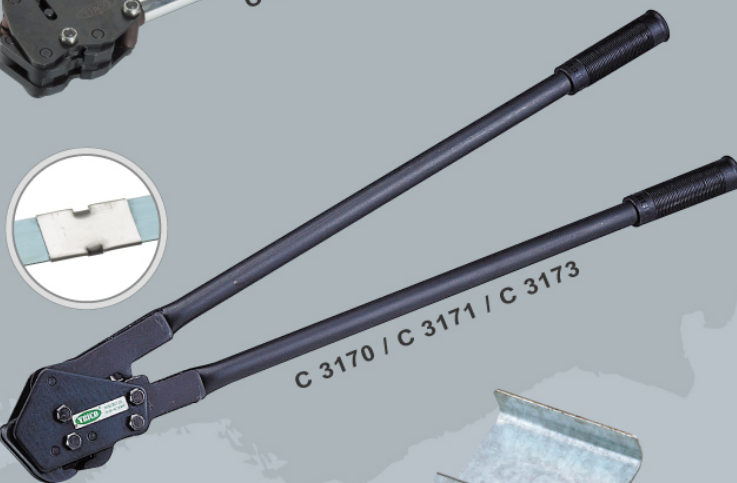
- C 3160 for steel strapping 3/4" and thickness from 0.025" up. Use with CS 061 open seal or CS 20 / CS 21 / CS 22 closed seal.
- C 3166 for steel strapping 1" x 0.035".
- C 3180 for steel strapping 1-1/4" x 0.035". Use with CS 28 closed seal.



C 3170 / C 3171 / C 3173

Single down cut side action steel strapping sealer with steel pipe handle. (Handle length 27")

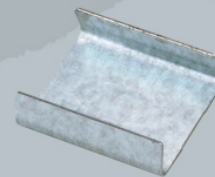
- C 3170 for steel strapping 3/4". Use with CS 061 open seal or CS 20 / CS 21 / CS 22 closed seal.
- C 3171 for steel strapping 1" x 0.035". Use with closed seal.
- C 3173 for steel strapping 1-1/4" x 0.035". Use with CS 28 closed seal.



CS 041 / CS 051 / CS 061

Open seals (snap-on seals) for steel strapping. 25mm long and 0.6mm thick.

- CS 041 for 1/2" straps. Use with C 3104 / C 3124 / C 3154 / C 3204.
- CS 051 for 5/8" straps. Use with C 3105 / C 3125 / C 3155 / C 3205.
- CS 061 for 3/4" straps. Use with C 3106 / C 3126 / C 3156 / C 3206 / C 3226.

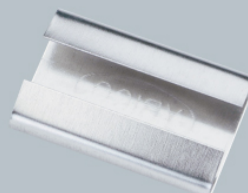


CS 041 / CS 051 / CS 061

CS 14 / CS 15

Seals for steel strapping combination tool.

- CS 14: 1/2".
- CS 15: 5/8".

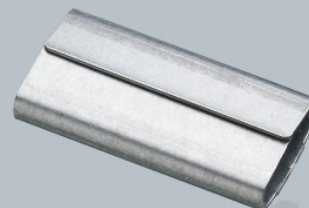


CS 14 / CS 15

CS 20 / CS 21 / CS 22

3/4" closed seal for steel strapping. Use with C 3226 / C 3160 / C 3170.

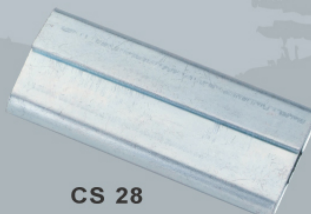
- CS 20 : 44.5mm x 0.8mm.
- CS 21: 50mm x 0.8mm.
- CS 22: 57mm x 0.8mm.



CS 20 / CS 21 / CS 22

CS 28

1-1/4" closed seal for steel strapping. 50mm long x thickness 0.9mm. Use with C 3173 / C 3180.

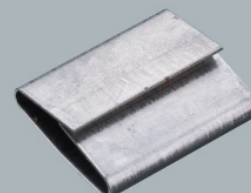


CS 28

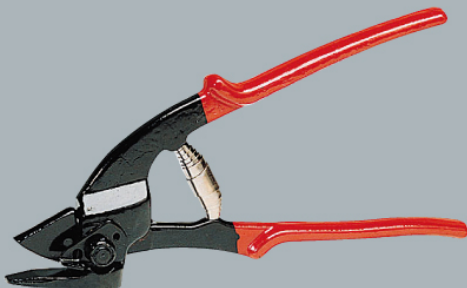
CSB 41 / CSB 51 / CSB 61

Closed seal for steel strapping tools.

- CSB 41 for 1/2" straps. 22mm x 0.6mm. Use with C3104 / C 3124 / C 3154 / C 3204 / SA 104.
- CSB 51 for 5/8" straps. 22mm x 0.6mm. Use with C3105 / C 3125 / C 3155 / C 3205 / SA 105.
- CSB 61 for 3/4" straps. 25mm x 0.6mm. Use with C3106 / C 3126 / C 3156 / C 3206 / SA 106 / C 3226.



CSB 41 / CSB 51 / CSB 61

**H 100**

Carbon steel drop forged cutter for 3/8" ~ 3/4" x 0.035" steel straps.

**H 101**

Same as H100 and with magic tie for safety storage.

**H 201**

Best selling carbon steel drop forged cutter with wide blades and yellow PVC grips. For steel strapping 3/8" ~ 1-1/4" x 0.035"

H 200

Same as H201 but without yellow PVC grips.

**H 230**

Heavy duty steel strap cutter with wide blades for 3/8" ~ 1-1/4" x 0.035". "SAE 4140" high carbon steel drop forged.

**H 240**

Regular duty cutter for 3/8" ~ 1-1/4" x .035" steel straps.

**H 263**

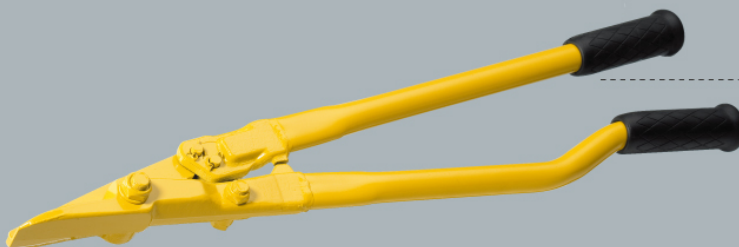
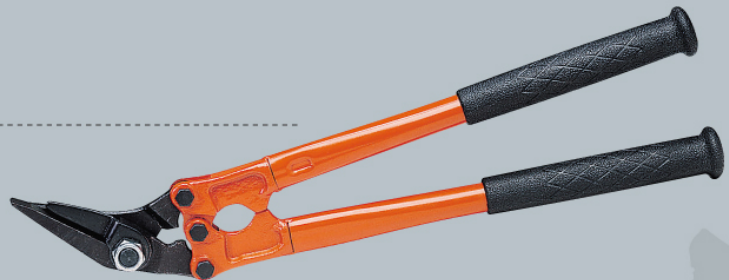
Cutter with rubber pads gently releases the straps after cutting. For steel strapping 3/8" ~ 1-1/4" x 0.035".

**H 268**

Cutter with safety function which holds excess end strap when cut the strap. For 3/8" ~ 1-1/4" x 0.035" straps.

H 300

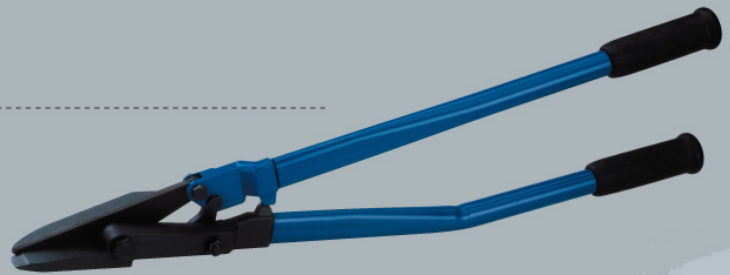
High carbon steel lost wax casting strap cutter for straps up to 2" x 0.035".

**H 305**

SAE 4140 high carbon steel drop forged heavy duty steel strap cutter for straps up to 2" x 0.035".

H 306

Heavy duty steel strap cutter for straps up to 2" x 0.050".

**H 307**

Same as H306 but with hammer handle which allows the user to push the blade easily in between the strap and package. No more twist that damage the blade, strap and/or the package.



Hammer the blade to squeeze it in between the strap and package.



No more twist that damage the blade, strap and/or the package.

**H 410**

High carbon steel drop forged strap cutter for straps up to 2" x 0.05". Blade can be reverse when dull.



**S 210**

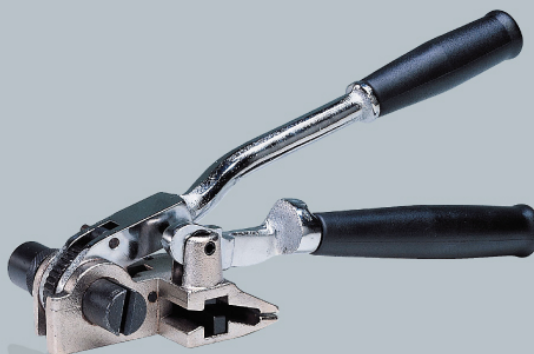
Push bar tensioner with breaker nose to cut the strap.
For 3/8" ~ 3/4" x 0.02" max. stainless steel banding. Use
with CS 34 / CS 35 / CS 36 / CS 53 / CS 54 / CS 55 /
CS 56.

**S 225**

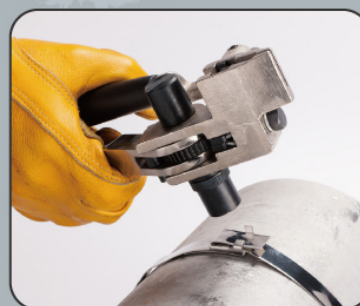
Rack tensioner with duckwork and built-in cutter for 3/8" ~
3/4" stainless steel banding. Use with CS 34 / CS 35 / CS
36 / CS 53 / CS 54 / CS 55 / CS 56.

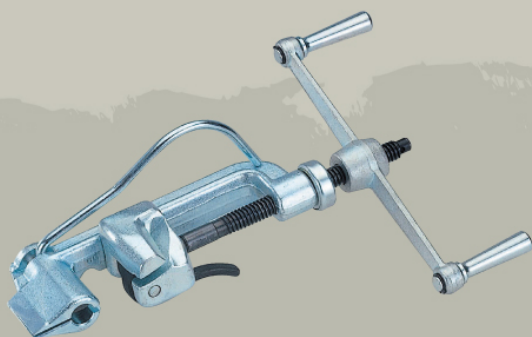
**S 226**

Rack tensioner with duckwork and built-in cutter for 3/8" ~
3/4" stainless steel banding. Use with CS 34 / CS 35 / CS
36 / CS 53 / CS 54 / CS 55 / CS 56.

**S 240**

Durable tensioner with cutter & hammer knob for binding
irregular & non-compressible packages. **For stainless steel
bands 3/8" ~ 3/4" x 0.03" max.** Use with CS 34 / CS 35 /
CS 36 / CS 53 / CS 54 / CS 55 / CS 56 seal.

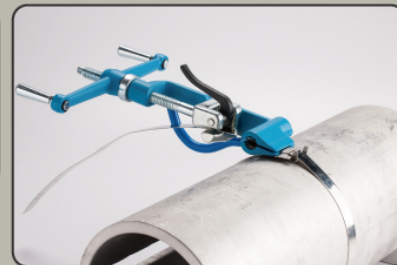
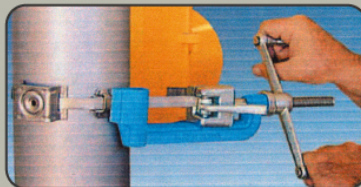
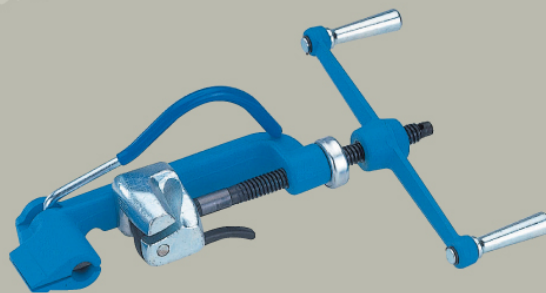


**S 260**

Drop forged banding tool with built-in cutter for stainless steel bands 3/8" ~ 3/4" x 0.03" max. Essential parts are heat-treated. Use with CS 34/ CS 35/ CS 36/ CS 53/ CS 54 / CS 55/ CS 56 seal.

S 262

Same as S260 except all parts are heat-treated.

**CS 34 / CS 35 / CS 36**

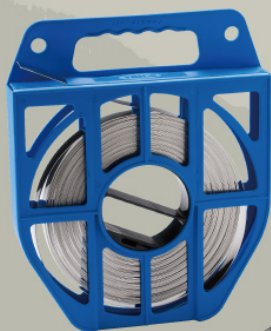
Stainless steel type 304.

- CS 34 for 1/2" straps.
Use with S225/S226/S227/S246/S240/S260/S262.
- CS 35 for 5/8" straps.
Use with S225/S226/S227/S246/S247/S240/S260/S262.
- CS 36 for 3/4" straps.
Use with S225/S226/S227/S246/S247/S249/S240/S260/S262/S270.

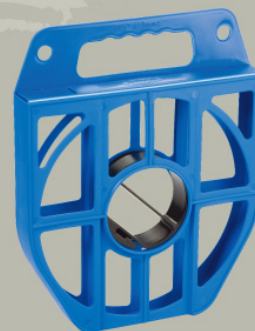
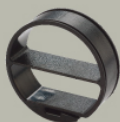
**CS 53 / CS 54 / CS 55 / CS 56 / CS 59**

Stainless steel type 304.

- CS 53 for 3/8" straps. Use with S225/S226/S227/S246/S240/S260/S262/S278.
- CS 54 for 1/2" straps. Use with S225/S226/S227/S246/S240/S260/S262.
- CS 55 for 5/8" straps. Use with S225/S226/S227/S246/S247/S240/S260/S262.
- CS 56 for 3/4" straps. Use with S225/S226/S227/S246/S247/S249/S240/S260/S262/S270.
- CS 59 for 1-1/4" straps. Use with S227/S247/S249/S270.



Stainless steel banding coil not included.

**SB 100**

3" core insert for plastic tote.

SB 104 / SB 106

Plastic tote for plastic/steel strapping and stainless steel banding.

SB 104 for 1/2".

SB 106 for 5/8" and 3/4".

SB 1041 / SB 1061

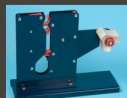
Plastic tote with 3" core insert installed.

SB 1041 for 1/2".

SB 1061 for 5/8" and 3/4".



taponadoras



cierra bolsas



llenadoras



sopladoras



embolsadoras



basculas



flejadoras



impresoras
y
codificadoras



selladoras



empleadoras envolvedoras y tuneles de encogimiento



paletizadoras



llenadoras



transportadores



empacadoras
de vacío

encintadoras



maqpack
empaque y embalaje

AV. PATRIA 966 COL. ECHEVERRIA, GUADALAJARA JAL. www.maqpack.com.mx

TEL. 01(33) 3124-6532, 3343-4487, 3367-4467



bolsa stand up pouch



cajas de caton



peliculas
termoencogibles

poliestresh



cajas para pizza



poliburbuja



micpac

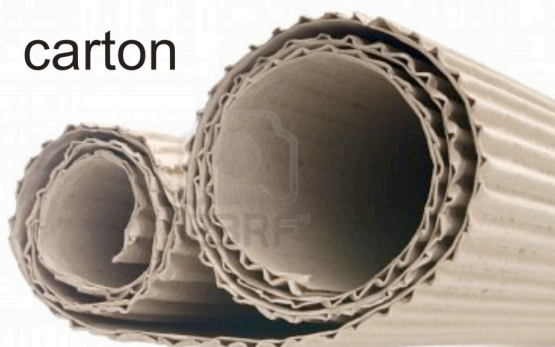


cintas



fleje

carton



bolsa de alto vacio



maqpack
empaque y embalaje

AV. PATRIA 966 COL. ECHEVERRIA GUADALAJARA JAL www.maqpack.com.mx
TEL. 01(33) 3124-6532, 3343-4487, 3367-4467